



## DR-500T Turbo Pro 500

## *Ditchrunner's Pro Series*



The **Ditch Runner** designed DR-500T Turbo Pro 500 Squeegee-Spray Sealcoat system has been a proven industry standard for years. It is rugged built and powered by a Kubota turbo charged water cooled diesel engine. Hydrostatic drive system gives you positive control in low and high speed for traveling. The piston pump system provides today's Sealcoating professional with the most versatile spray solution available. The 8' squeegee has 4 blades with a pedal controlled 4" material drop.

### **Standard Features:**

- 44 HP Kubota diesel, water cooled engine
- 100 Gallon piston material pump
- Hydrostatic rear wheel drive (Both wheels)
- Parking Brake (Both wheels)
- Power Steering
- Hydraulic joystick for positive control
- Low profile engine deck for stability and operator visibility
- 30 Gal water fogging system

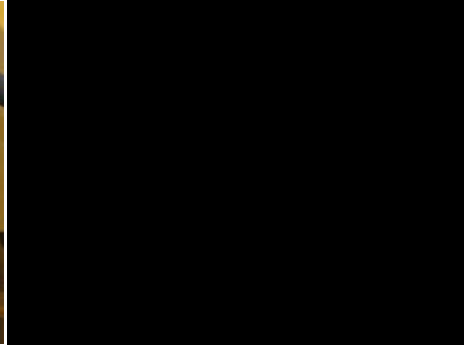
**Sales 770-832-1192**

**Part & Service 770-646-6998**

**[www.ditchrunner.net](http://www.ditchrunner.net)**

**Reid Manufacturing LLC.  
155 Evelyn S. Wade Blvd.  
Buchanan, GA. 30113**

# DR-500T Turbo Pro 500 Squeegee/Spray System



Easy Operator Controls



Large Material Loading w/bag ripper



Foot controlled Material Discharge



Fully Hydraulic Squeegee Controls Raise, Tilt, Swing



## Ditch Runner's Material Pump and Self Cleaning Surge Tank

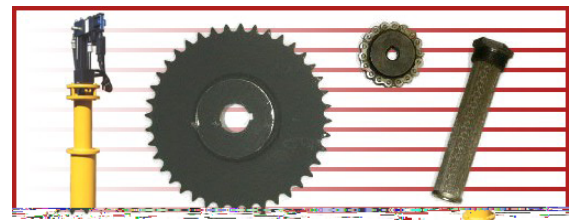
100 Gallon  
Suction & Discharge  
Direct Hyd. Drive  
High Volume  
Low Maintenance

Length	Width	Height	Weight Lbs.	Capacity Gal.	Parking Brake
162"	91"	77"	5200	500	Hyd. (2)

### SPECIFICATIONS

<b>Engine System</b>	44 HP Kubota Turbo Diesel eng. Water cooled.
<b>Material Tank</b>	3/16 steel, 500 Gal., 24"X 31" Manway w/bag ripper
<b>Pump System</b>	DR100 Gallon piston pump with filtering system
<b>Travel</b>	Operator controlled hydrostatic
<b>Agitator</b>	1 1/2" drive shaft, hydraulic controlled, reversible
<b>Handwand</b>	75' Hose, 6' aluminum handwand
<b>Water Fogging</b>	30 Gal. water capacity fogging system

Reid Manufacturing also provides parts and service for Blaw-Knox, Neal, and Nealco machines.  
For Parts: (770) 646-6998



Manufacturer reserves the right to make changes and improvements to all its equipment at its discretion